



# Mornington Peninsula Bonsai Society Inc

## January 2022

### HAPPY NEW YEAR

Established: 1979

#### In This Issue:

- Presidents Report
- Club Meeting Night
- Our Sickies
- Annual General Meeting
- Gwen's Photos
- Bonsai Calender
- World Bonsai Convention 2022
- Funnies
- Don't Forget Photos for news-letter etc.
- Diary Dates

#### Club Details:

jillian24@bigpond.com

Meetings are held at the **Moorooduc Community Hall**, cnr Derril Road and Moorooduc Rd, Moorooduc, commencing 7.30pm, the third Wednesday of the month (no meeting in December)

#### Office Bearers:

President: Steve Jarrold  
0451 942 944  
Secretary: Jillian Lewis  
0407 361 989  
Treasurer: Gwen Robinson  
0411 331 517

#### Email Editor—Jillian Lewis

Email address for news & photos  
jillian24@bigpond.com  
Correspondence: 8 Charles Drive,  
Pearcedale. 3912

#### Social Media

Facebook  
<https://www.facebook.com/bonsaimornington/>

#### Presidents Report:

I wish everyone a Happy New Year and hope you all had a safe and enjoyable Christmas. Things are still looking bleak with the virus surging around us, but at this stage we are able to hold our normal meetings. We will still need to follow covid guidelines at all times. On Wednesday next, Jan 19th, bring along your Figs for a workshop and discussion night. It's a good time to prune, repot and style your figs now, or to seek advice on any issues you may have. Don't forget to bring a tree for the display table as it is always great to see a good selection of trees.



At our February meeting we will be holding the AGM. This is an opportunity for you to voice an opinion on matters relating to the Mornington Peninsula Bonsai Society. It is important, for the Society, to have fresh ideas to improve the way we currently operate. I look forward to seeing everyone on Wednesday. Cheers Steve



**Wednesday January 19th**—Bring along your Figs for the Display Table, we also will run the night as a full on workshop, so bring your trees along if you have work to do on them. I know I do. If you don't have one, then bring along another type to work on. The more the merrier, see you there from 7.30. Bruce has kindly donated two Figs in a pot for the raffle on that night. Jill

**Our Sickies**—If you know of any Club member who is unwell, please let Jill know. Thank you.

## ANNUAL GENERAL MEETING

You will have already received information that our Annual General Meeting will be held at our Club Night on the 16th February and that anyone can nominate for the Committee. You can self nominate if you wish, do have a think about it as we would love to welcome new members to the Committee. Feel free to give me a call if you need any information on how things work. Jillian



**Photos Courtesy of Gwen - her Bonsai after settling into their new home. Some nice trees here. Gwen loves her little miniatures.**



## BONSAI CALENDER 2022

- JAN: Check/Remove wires, Water/Feed regularly  
Good time to work on Figs if you have any, they love the heat.
- FEB: Keep watering but stop feeding, reduce trimming
- MAR: Growth at a standstill, only Nitrogen-free fertiliser
- APR: Deciduous trees lose leaves, water if necessary
- MAY: Remove wiring carefully, check all plants for pests
- JUNE: Water if necessary, do not feed
- JUL: Dormant period for most trees and plants
- AUG: Prune hardy deciduous trees, prepare for repotting
- SEP: Wire deciduous trees and repot most trees
- OCT: Prune most trees, end repotting and watch for bugs
- NOV: Start feeding and light trimming, water regularly



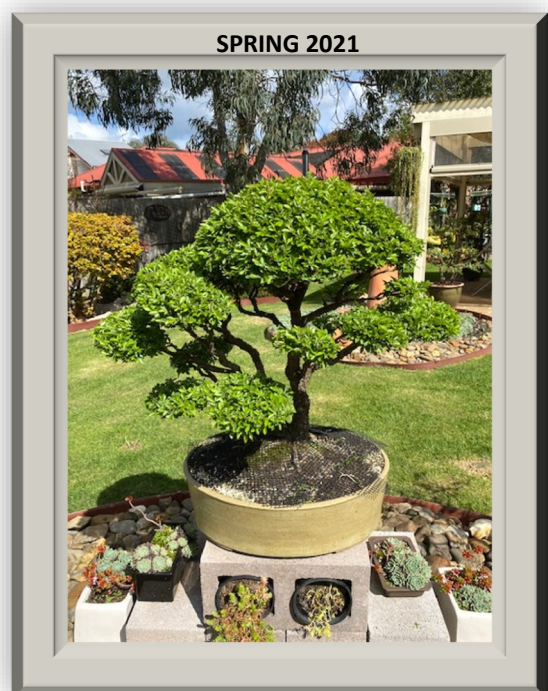
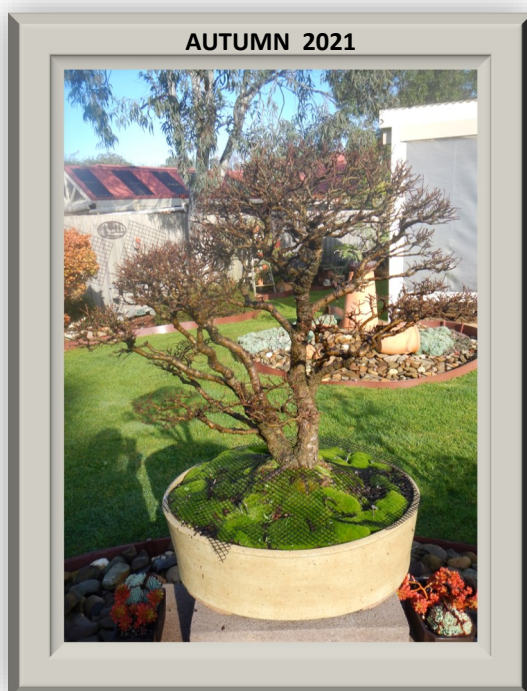


## **Pinus densiflora (Japanese Red Pine)**

One of our President, Steve's trees—Lovely



## **Hazel's Fifty year old Chinese Elm Grown From A Seedling**





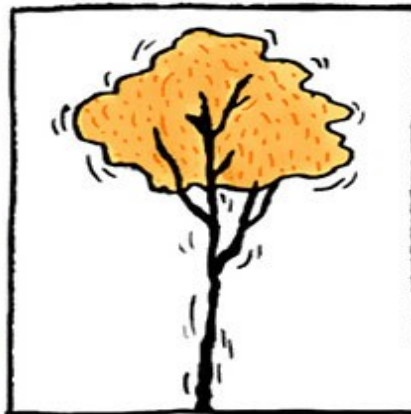


**9th World Bonsai Convention was postponed until 13-16 October 2022 in Perth, W.A.** An important element of the Convention will be a photographic exhibition Australian Bonsai and Suiseki. As club members, we have been asked to take photographs of our bonsai when at their peak condition and send them on to them. Remember to photograph your best bonsai for this event—and to have a record of your own. Courtesy of Waverley Bonsai Group Newsletter

## Anxie-Trees



WEeping WILLOW



QUAKING ASPEN



WORRIED SEQUOIA



SWEATY PALMS



QUEASY SAPLING



FOUR EYES BY GEMMA CORRELL 2015

Don't forget, keep sending in your photographs and snippets of information for the Newsletter. Let us see what you have been up to over the holidays. Thank you in anticipation.



## *Diary Dates 2022*



- Wed Jan 19** Club Night - Fig Workshop & discussions 7.30pm
- Sat Feb 5** Open Workshop Advance 10.00am—2pm
- Wed Feb 16** Club Night 7.30pm and AGM 2021
- Sat Mar 5** Open Workshop Advance 10.00am—2pm
- Wed Mar 16** Club Night—Display Table & Mini Workshop
- Wed Apr 20** Club Night- TBA
- Sat May 7** Open Workshop Advance 10.00—2pm
- Wed May 18** Club Night - TBA
- Wed Jun 15** Club Night— Workshop night—deciduous trees or others.
- Wed Jul 20** Club Night TBA
- Sat Aug 6** Open Workshop Advance 10—2pm
- Wed Aug 18** Club Night—Triple Tree Demonstration
- Sat Sep 3** Open Workshop Advance 10—2pm
- Wed Sept 21** Club Night TBA
- Sat Oct 1** Open Workshop 10—2pm at Jillian's place.
- Wed Oct 9** Club Night - Quentin Valentine—Natives
- Wed Nov 16** AGM 2022 and Christmas Breakup